







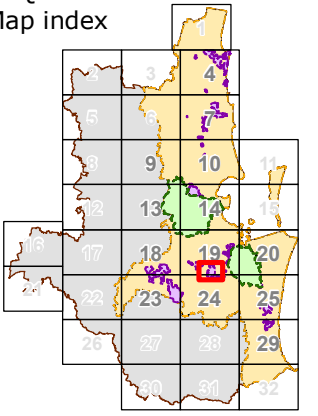


**South East Queensland  
Koala Conservation  
State Planning Regulatory  
Provisions.  
Identified koala  
broad-hectare area:  
01 Oxley Wedge**

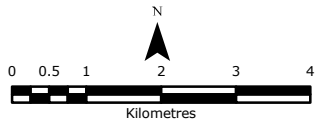
- Map Legend**
-  Identified koala broad-hectare area
  -  Planning area extent (outside scope of SPRP)
  -  Priority koala assessable development area (PKADA)
  -  koala assessable development area (KADA)
  -  Urban Footprint
  -  Cadastre (January 2010)
  -  Major Roads
  -  Water

map SPRP\_IKBA01  
May 31, 2010.

SEQKPAv1.2  
Map index



GDA94, MGA56  
Scale 1 : 50,000 at A1



**Data Sources**  
SEQ Landcover, SEQ Koala Habitat mapping (GHD, 2009);  
Digital Cadastral Database (DCDB) (Department of Environment  
and Heritage Protection, Jan 2010); Drainage mapping (Geoscience Australia);  
State Digital Road Network (MapInfo Australia, 2006); LGA Boundary (Dept.  
of Planning and Infrastructure); Towns, Built up Areas (GA, 2003)

**Disclaimer**  
While every care is taken to ensure the accuracy of this product the  
Queensland Government, MapInfo Pty Ltd and the Australian Government make  
no representations or warranties about the accuracy, reliability, completeness  
or suitability for any particular purpose and disclaims all responsibility  
and all liability (including without limitation, liability in negligence) for all  
expenses, losses, damages (including indirect or consequential damage)  
and costs you may incur as a result of the product being inaccurate,  
or incomplete in any way or for any reason. Landat TM imagery 2008,  
supplied by the Statewide Landcover and Tree Study (SLATS),  
was also used in producing this information.  
© The State of Queensland 2010

