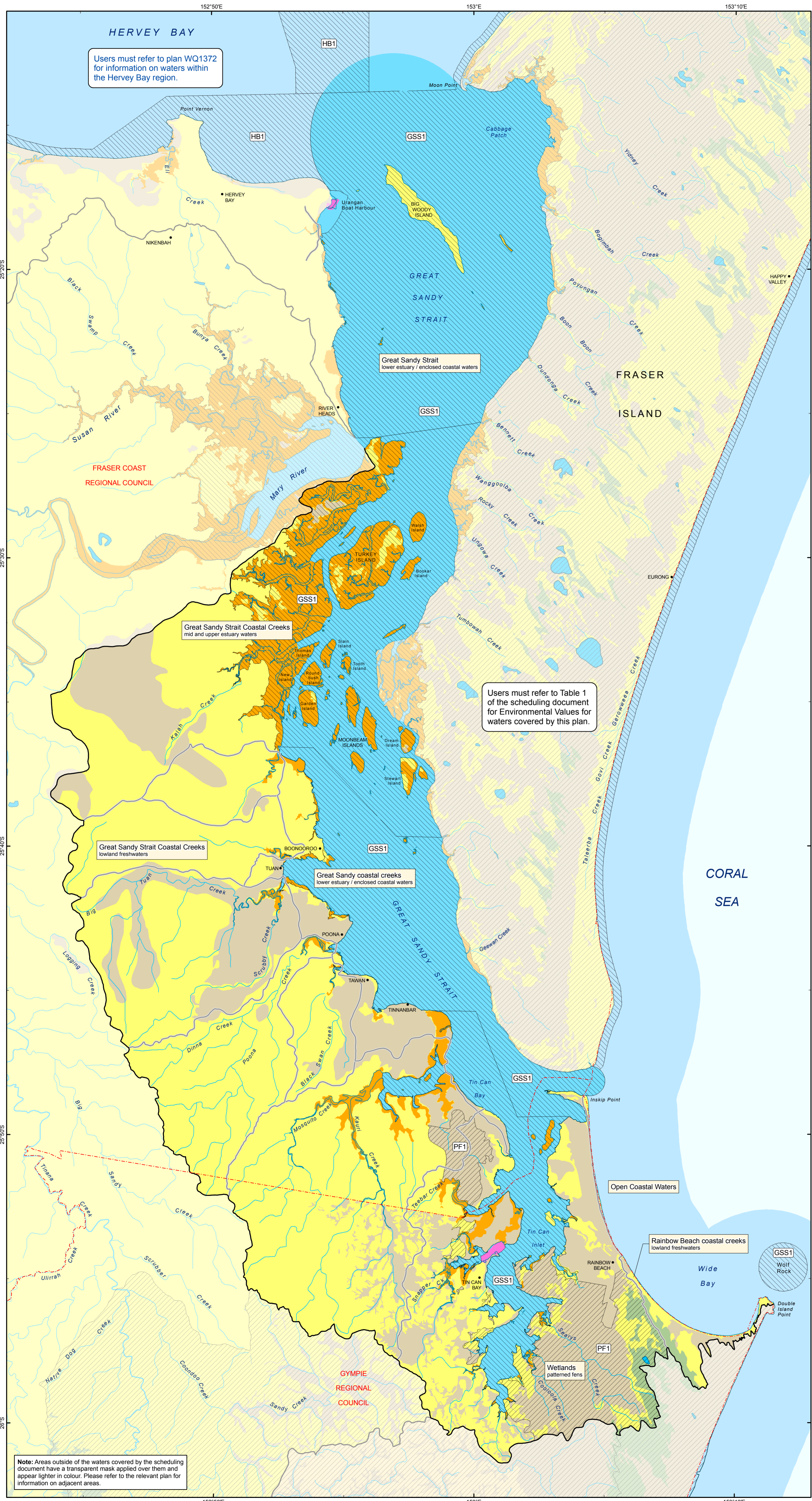


GREAT SANDY STRAIT AND COASTAL CREEKS

Part of Basin 140 and adjacent to Basins 137, 138, 139



Users must refer to plan WQ1372 for information on waters within the Hervey Bay region.

Great Sandy Strait lower estuary / enclosed coastal waters

Great Sandy Strait Coastal Creeks mid and upper estuary waters

Great Sandy Strait Coastal Creeks lowland freshwaters

Great Sandy coastal creeks lower estuary / enclosed coastal waters

Users must refer to Table 1 of the scheduling document for Environmental Values for waters covered by this plan.

Note: Areas outside of the waters covered by the scheduling document have a transparent mask applied over them and appear lighter in colour. Please refer to the relevant plan for information on adjacent areas.

Environmental Protection (Water) Policy 2009

South-east Queensland Map Series

PLAN WQ1402

Publication date: July 2010

This plan forms part of the Great Sandy Strait and Coastal Creeks Environmental Values and Water Quality Objectives scheduling document, prepared pursuant to the *Environmental Protection (Water) Policy 2009*.



Key to Environmental Values



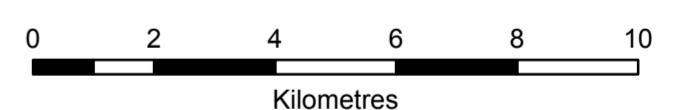
Legend

- Town
 - River / creek
 - Coastline
 - Sub-catchment boundary
 - Boundary of waters covered by the scheduling document
 - Local government boundary
- Management Intent for Waters**
- High ecological value freshwaters (maintain)
 - High ecological value marine / estuarine waters (maintain)
- Water Types**
- Marine / estuarine waters**
- Open coastal waters
 - Enclosed coastal / lower estuary
 - Middle estuary
 - Upper estuary
 - Tidal canals / constructed estuaries / marinas / boat harbours
- Freshwaters**
- Lowland freshwaters
 - Wallow / tannin freshwaters
 - Coastal freshwaters
 - Upland freshwaters
 - Lakes / reservoirs

Note for users: Areas of the catchment that are not shown on this map as having a management intent of high ecological values, slightly disturbed or highly disturbed, have a management intent of moderately disturbed.



Projection: Map Grid of Australia (MGA) Zone 56
Horizontal Datum: Geocentric Datum of Australia 1994 (GDA94)



Scale of 1:125,000 when printed @ A1



Disclaimer
Whilst every care is taken to ensure the accuracy of this product, the Department of Environment and Resource Management makes no representations or warranties about its accuracy, reliability, completeness or suitability for any particular purpose and disclaims all responsibility and all liability (including indirect or consequential damage) and costs which you may incur as a result of the product being inaccurate or incomplete in any way and for any reason.
Includes GEODATA product © Commonwealth of Australia (Geoscience Australia) 2010.
© The State of Queensland (Department of Environment and Resource Management) 2010