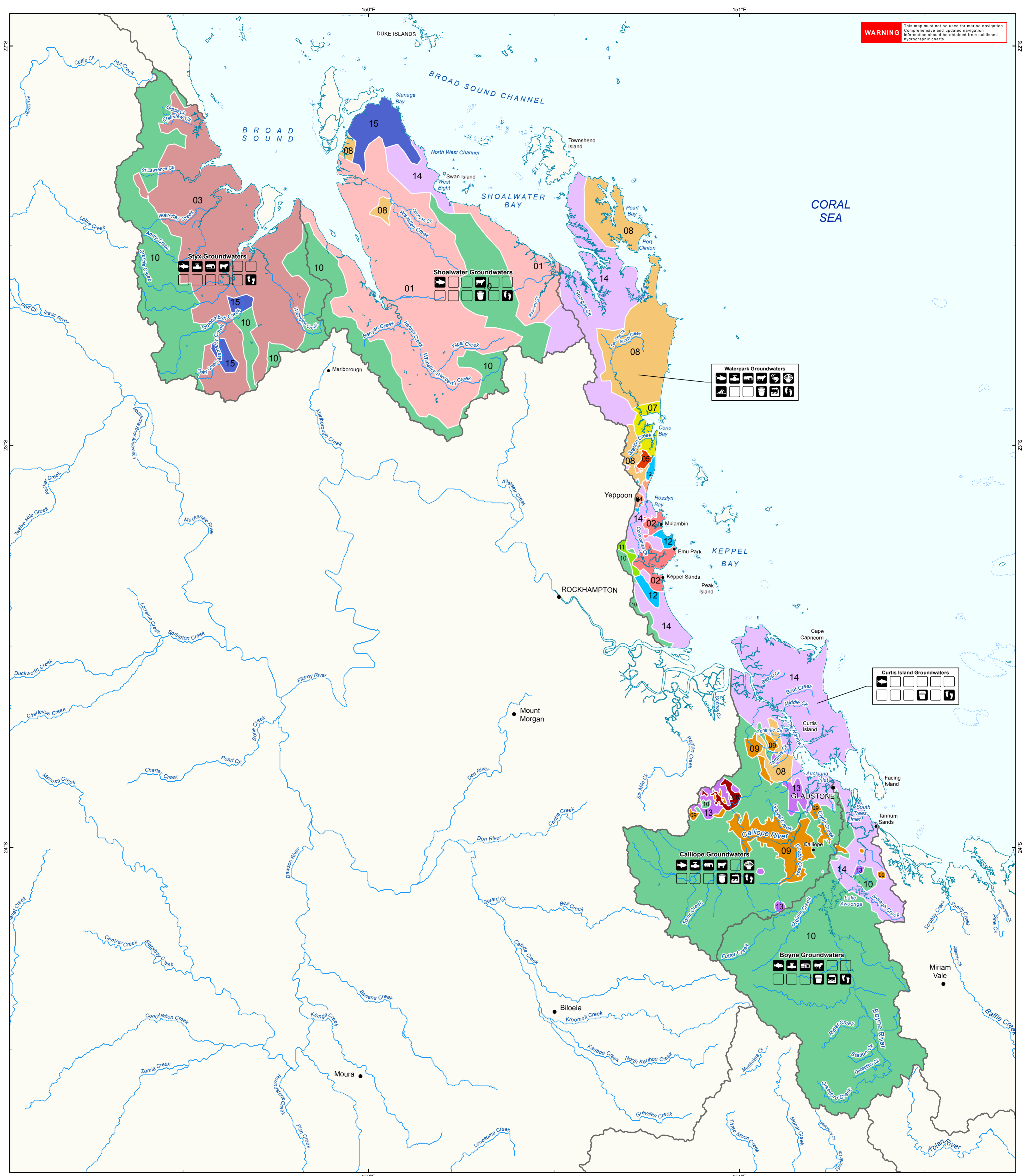


WARNING This map must not be used for marine navigation. Comprehensive and updated navigation information should be obtained from published hydrographic charts.



Legend

- Town
- Coastline
- River / creek
- Basin boundary

Groundwater chemistry zones

- 1 Banskia
- 2 Coorooman
- 3 Styx
- 4 Yeppoon
- 5 Pacific
- 6 Jacob
- 7 Woodbury
- 8 Welton
- 9 Leixlip
- 10 Uplands
- 11 Cawarral
- 12 Emu
- 13 Bracewell
- 14 Bondoola
- 15 Bison

Key to Environmental Values

- Aquatic Ecosystems
- Integrating Farm Supply
- Rock Water
- Aboriginal Human, Consumer
- Primary Recreation
- Visual Recreation
- Dinking Water
- Industrial Use
- Cultural & Spiritual Values

Disclaimer
 Whilst every care is taken to ensure the accuracy of this product, the Department of Environment and Heritage Protection makes no representations or warranties about its accuracy, reliability, completeness or suitability for any particular purpose and disclaims all responsibility and all liability (including without limitation, liability in negligence) for all expenses, losses, damages (including indirect or consequential damage) and costs which you may incur as a result of the product being inaccurate or incomplete in any way and for any reason.
 Includes data © Commonwealth of Australia (Geoscience Australia, GBRMPA) 2014.
 © State of Queensland, 2014

WQ1273 - Capricorn Curtis Coast Groundwater Zones

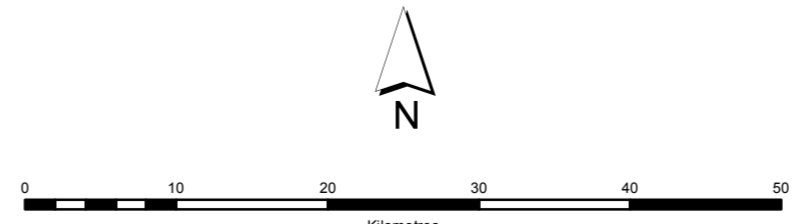
Basins 127, 128, 129, 131, 132 and 133

Environmental Protection (Water) Policy 2009
 Central Queensland Map Series

This plan forms part of the Capricorn Curtis Coast Region Environmental Values and Water Quality Objectives scheduling documents, prepared pursuant to the Environmental Protection (Water) Policy 2009.



Publication date: November 2014



Scale: 1:500,000 @ A1
 Projection: Mercator

Horizontal Datum: Geocentric Datum of Australia 1994 (GDA94)

