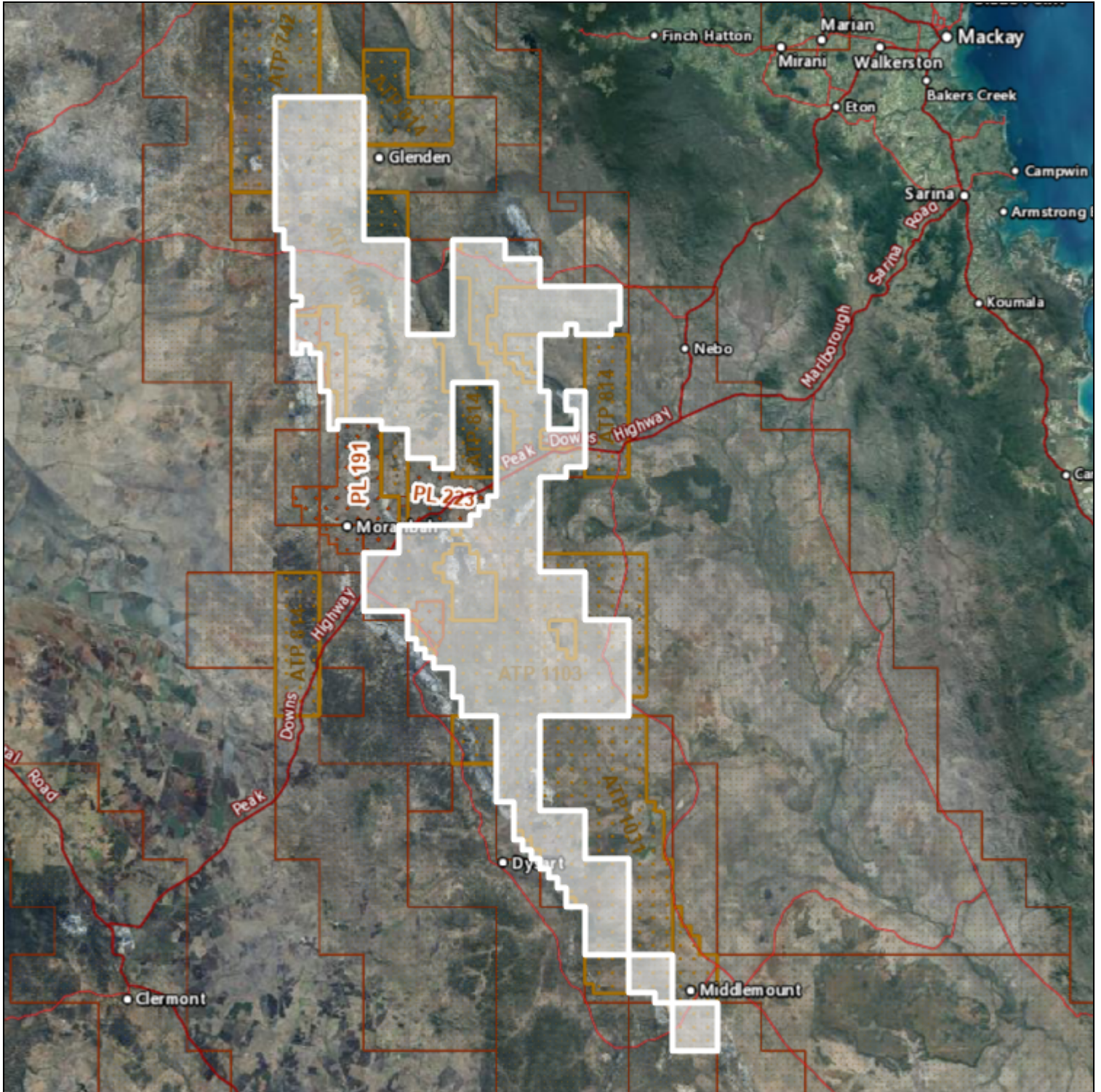


ATP1103

UWIR 2014

21°4'52"S 147°24'18"E

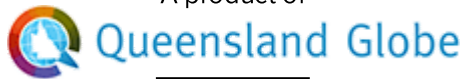
21°4'52"S 149°27'34"E



22°59'7"S 147°24'18"E

22°59'7"S 149°27'34"E

A product of



Legend located on next page



0 25 km

Scale: 1:1155581

Printed at: A4

Print date: 11/8/2022

Projection: Web Mercator EPSG 102100 (3857)

For more information, visit
<https://qldglobe.information.qld.gov.au/help-info/Contact-us.html>

Includes material © State of Queensland 2022. You are responsible for ensuring that the map is suitable for your purposes. The State of Queensland makes no representation or warranties in relation to the map contents and disclaims all liability.

If imagery is displayed, imagery includes material © CNES reproduced under license from Airbus DS, all rights reserved © 21AT © Earth-i, all rights reserved, 2019



Historical ATP 1991 to 2000



Historical ATP 2001 to 2010



Historical ATP after 2010



ATP application



ATP granted



PL application



PL granted



Places: Historical ATP 2001 to 2010

ATP 1103

Cities and Towns



Railway



Road crossing

— Bridge

— Tunnel

Road

— Highway

— Main

— Local

— Private

Earthstar Geographics

Includes material © State of Queensland (Department of Resources); © Commonwealth of Australia (Geoscience Australia); © 21AT, © Earth-i, all rights reserved, 2022.

© State of Queensland (Department of Resources) 2022