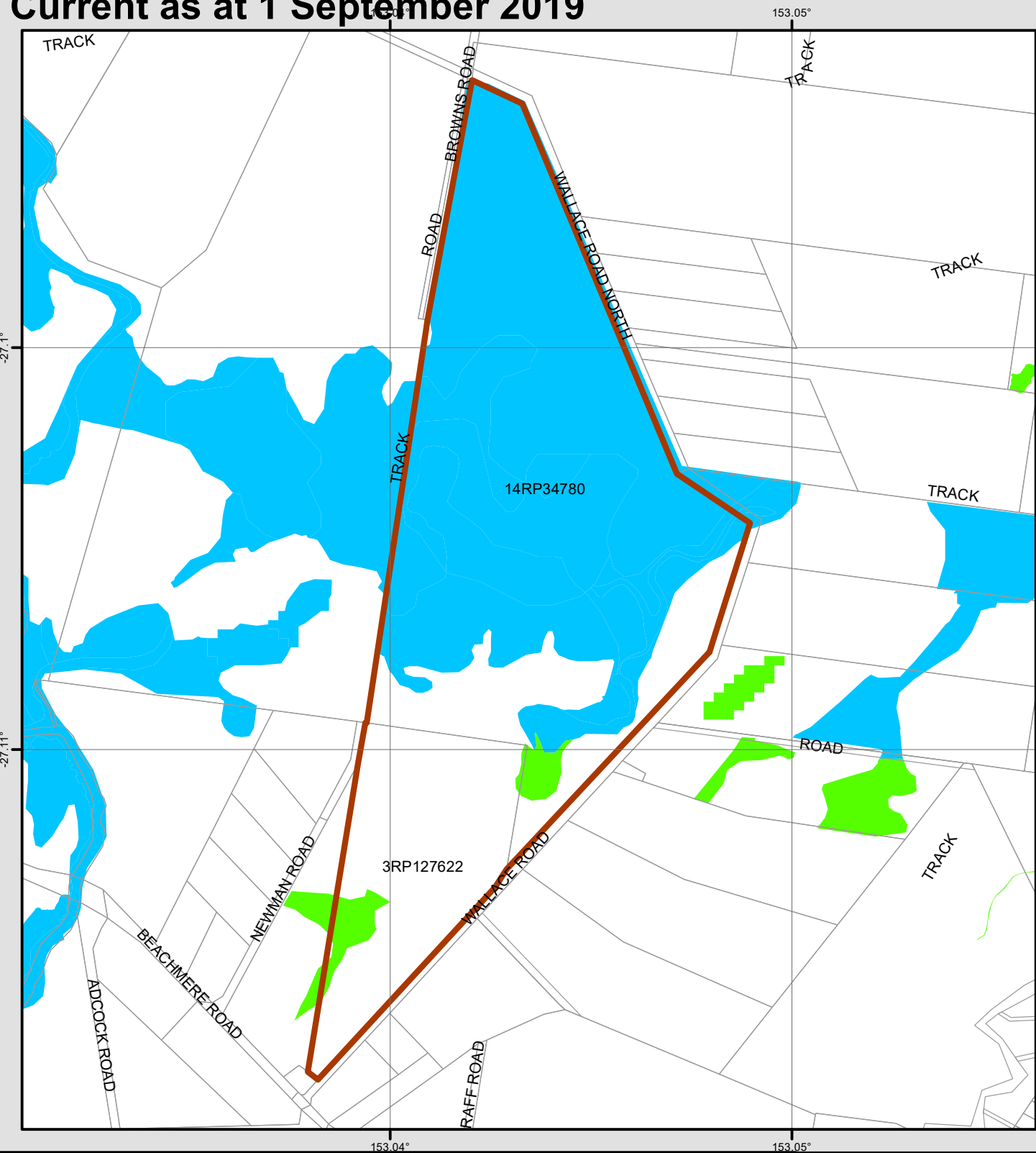
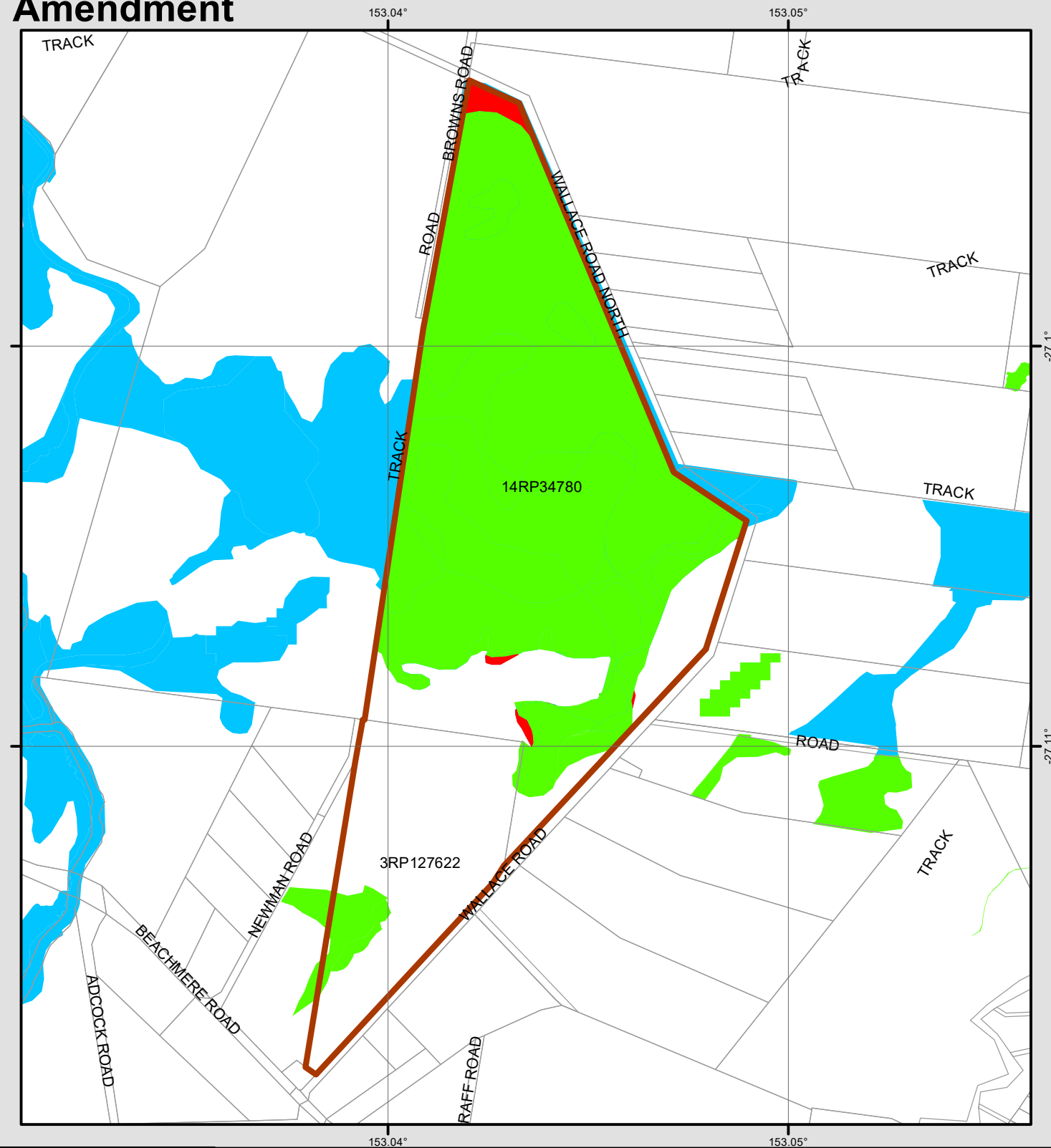


Current as at 1 September 2019

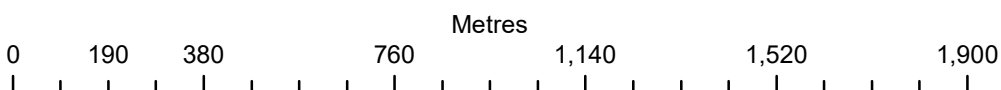


Amendment



Amendment of the Environmental Protection Wetlands 71-229 Wallace Road, Beachmere, Moreton Bay QLD 4507

Map Amendment Register Request No.128
Map of Queensland Wetland Environmental Values Amendment No: QWEV0014



NOTE:
An amendment to the Map of Queensland Wetland Environmental Values amends a wetland shown on the Map of Great Barrier Reef Wetland Protection Areas

Legend

- Amendment Area
- Property Boundary

Queensland Wetland Environmental Values

- GBR wetland of high ecological significance
- Wetland of high ecological significance
- Wetland of general ecological significance

- Remove wetland area

CERTIFICATION OF THE MAP OF QUEENSLAND WETLAND ENVIRONMENTAL VALUES OR THE MAP OF GREAT BARRIER REEF WETLAND PROTECTION AREAS

1. I, *Liz Young*, Director, Environmental Policy and Planning Branch, Environmental Policy and Programs, as delegate under Environmental Protection Delegation (No 2) 2019 for the Chief Executive (Environment) under the *Environmental Protection Act 1994*, by this certification, notify that the all data described in this paper format map amends an area shown as either:

- a wetland or a wetland protection area on the 'Map of Great Barrier Reef wetland protection areas' amended under section 186 of the Environmental Protection Regulation 2019, or

- a wetland on the 'Map of Queensland wetland environmental values' amended section 19 of the Environmental Protection (Water and Wetland Biodiversity) Policy 2019

2. The relevant map will be revised electronically to incorporate the amended data contained in this paper format map and released as a new version at a future date.

Liz Young
Director

20 January 2022

Date

GBR- Great Barrier Reef
HES- High ecological significance

