

WQ1184 - Black and Ross Basins Groundwater Zones
Basins 117 & 118

Environmental Protection (Water) Policy 2009
Central Queensland Map Series

This plan forms part of the Black and Ross River Basins Environmental Values and Water Quality Objectives scheduling documents, prepared pursuant to the Environmental Protection (Water) Policy 2009.

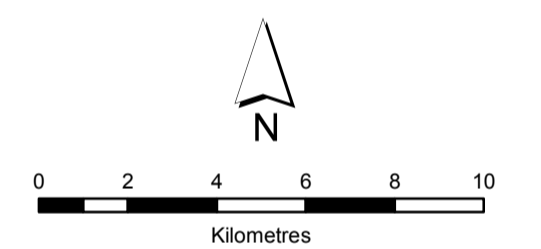


Legend

- Town
 - Coastline
 - River / creek
 - Lakes / reservoirs
 - Boundary of waters covered by the scheduling documents
- Groundwater chemistry zones**
- High salinity alluvial deposits - high NaCl, high salinity (zones: 1,4)
 - Coastal and floodplain - high NaCl, low salinity (zones: 8, 9)
 - Sodic - Na, HCO₃ low to moderate salinity (zone: 10)
 - Tropical alluvial - Na, Mg, HCO₃ low to very low salinity (zone: 20)

Key to Environmental Values

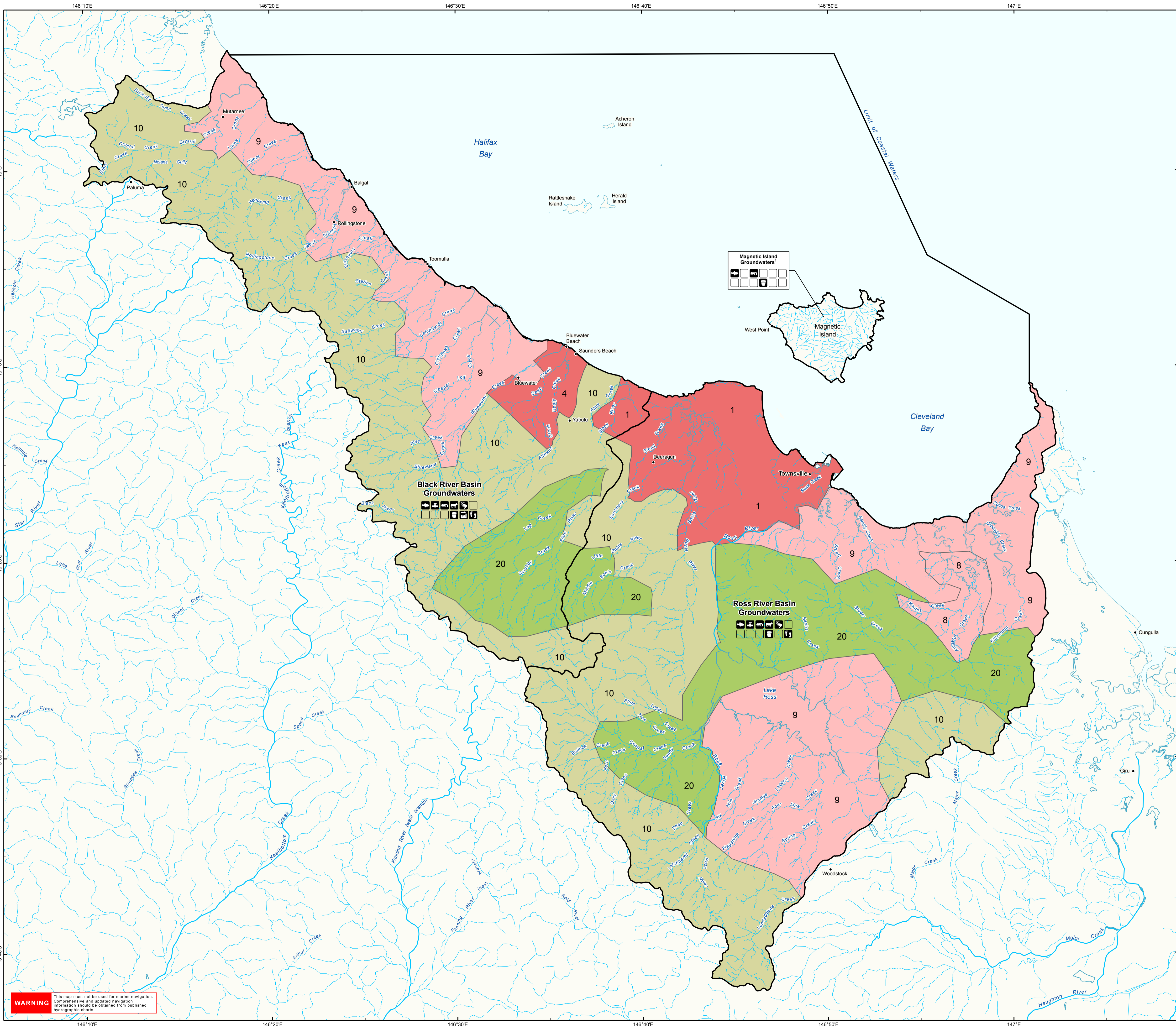
- Aquatic Ecosystems
- Irrigation
- Farm Supply
- Stock Water
- Aquaculture
- Human Consumer
- Primary Recreation
- Secondary Recreation
- Drinking Water
- Industrial Use
- Cultural & Spiritual Values



Scale: 1:170,000 @ A1
Projection: Map Grid of Australia (MGA) Zone 55
Horizontal Datum: Geocentric Datum of Australia 1994 (GDA94)

- Notes:**
- Magnetic Island is not shaded with a groundwater chemistry zone as there is insufficient information to establish local water quality objectives for this area. Refer to the Ross River Basin scheduling document for further information.
 - Chemistry zones are labelled with a zone identifier. Refer to Table 14 of the relevant scheduling document for further information.
 - Refer to individual scheduling documents and plans for further information on groundwaters and surface waters in the Black and Ross River basins.

Disclaimer
Whilst every care is taken to ensure the accuracy of this product, the Department of Environment and Heritage Protection makes no representations or warranties about its accuracy, reliability, completeness or suitability for any particular purpose and disclaims all responsibility and all liability (including without limitation, liability in negligence) for all expenses, losses, damages (including indirect or consequential damages) and costs which you may incur as a result of the product being inaccurate or incomplete in any way and for any reason.
Includes GEODATA product © Commonwealth of Australia (Geoscience Australia) 2013.
© State of Queensland, 2013



WARNING This map must not be used for marine navigation. Comprehensive and updated navigation information should be obtained from published hydrographic charts.