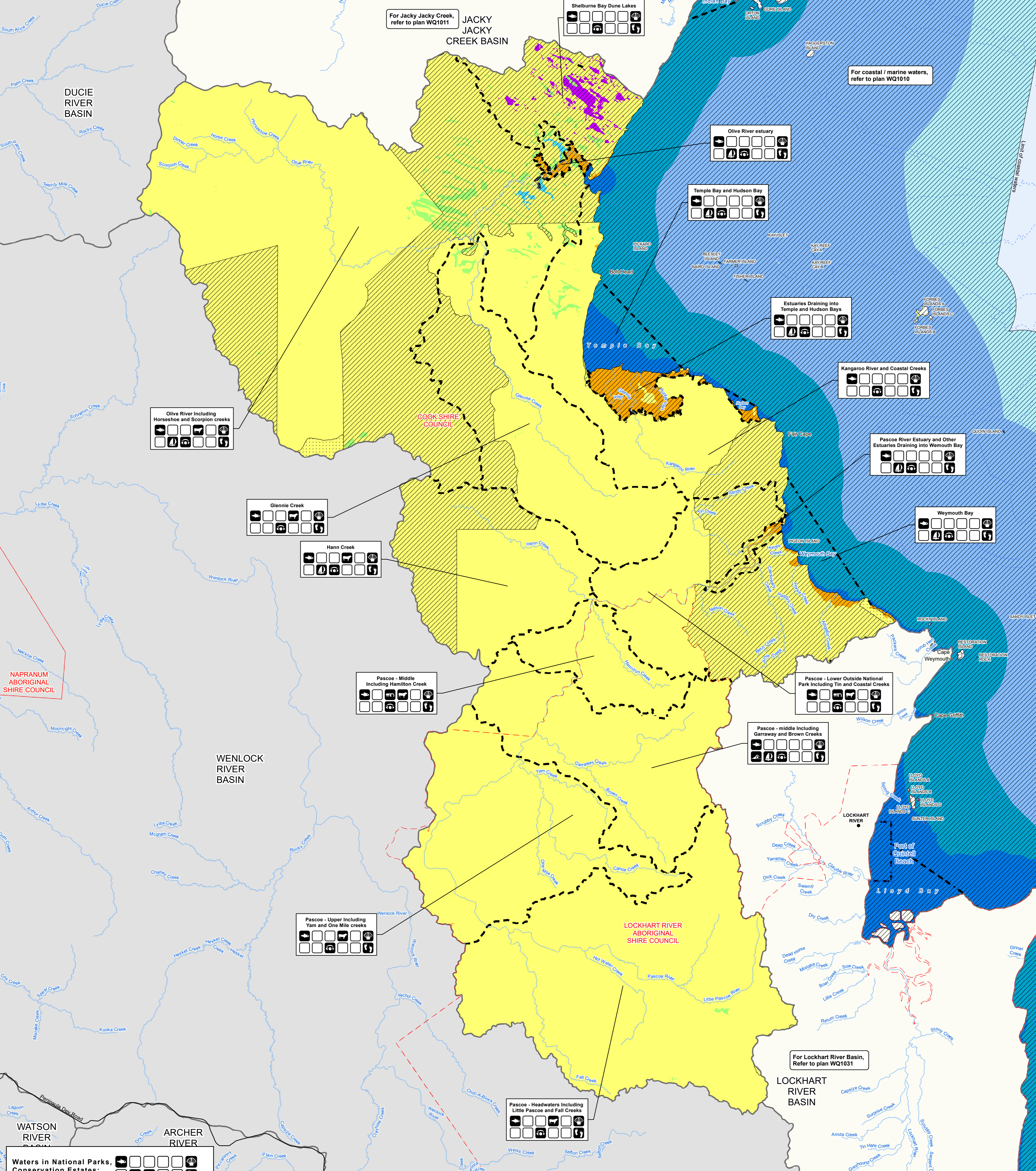


**WARNING** This map must not be used for marine navigation. Comprehensive and updated navigation information should be obtained from published hydrographic charts.



**Waters in National Parks, Conservation Estates:**

**Legend**

- Town
- Dam or weir
- Road
- Watercourse
- Maritime Safety Qld port limits
- Environmental value boundary
- Local government boundary
- Indicative reef boundary
- Boundary of the waters covered by the scheduling document
- Management intent
- High ecological value (HEV) waters
- Slightly disturbed (SD) waters

**Water Types - Fresh waters**

- Fresh waters
- Lakes / reservoirs
- Wetlands (pasture)
- Dune lakes
- Middle estuary
- Lower estuary / Enclosed coastal waters
- Open coastal waters
- Mushshel
- Othore

**Water Types - Marine / estuarine waters**

- Wetlands (pasture)
- Dune lakes
- Middle estuary
- Lower estuary / Enclosed coastal waters
- Open coastal waters
- Mushshel
- Othore

**Key to Environmental Values**

- Aquatic Ecosystems
- Irrigation
- Farm Supply
- Stock Water
- Amphibians
- Human Consumer
- Visual Recreation
- Drinking Water
- Industrial Use
- Cultural & Spiritual Values

**Notes:**

- Plan refers to Queensland waters. Roads and other infrastructure are exempt.
- For waters in undeveloped reaches not shown as high ecological value or slightly disturbed, where waters are in unmodified or minimally disturbed condition, the intent is to at least maintain existing water quality (refer accompanying schedule document). For waters in developed reaches the intent is to achieve the specified water quality objectives (moderately disturbed).
- Management intent for Dune lakes is to maintain natural condition (HEV).
- HEV waters exclude immediate port areas.
- Wetlands shown on this map are sourced from the Queensland Wetland Data Version 5.0 developed by the Queensland Wetlands Program. Refer to the Wetlands website ([wetlandsinfo.des.qld.gov.au](http://wetlandsinfo.des.qld.gov.au)) for the most current information on Queensland wetlands.
- Reference should be made to Matters of State Environmental Significance (MSES) datasets for a full coverage of MSES wetlands, available at: <https://iqdspatial.information.qld.gov.au>.

**Disclaimer**

Whilst every care is taken to ensure the accuracy of this product, the Department of Environment and Science makes no representations or warranties about its accuracy, reliability, completeness or suitability for any particular purpose and disclaims all responsibility and all liability (including without limitation, liability in negligence) for all expenses, losses, damages (including indirect or consequential damage) and costs which you may incur as a result of the product being inaccurate or incomplete in any way and for any reason.

Includes data © Commonwealth of Australia (Geoscience Australia, GBRMPA) 2020.

© State of Queensland, 2020

**WQ1021 - Olive-Pascoe River Basin**

**Basin 102**

**Environmental Protection (Water and Wetland Biodiversity) Policy 2019**

**Eastern Cape York Map Series**

This plan forms part of the Environmental Values and Water Quality Objectives scheduling document, prepared pursuant to the Environmental Protection (Water and Wetland Biodiversity) Policy 2019.

**Queensland Government**

Prepared on: 21 September 2020

Scale: 1:200,000 @ A1

Projection: Geocentric Datum of Australia 1994 (GDA94)

Horizontal Datum: Geocentric Datum of Australia 1994 (GDA94)

