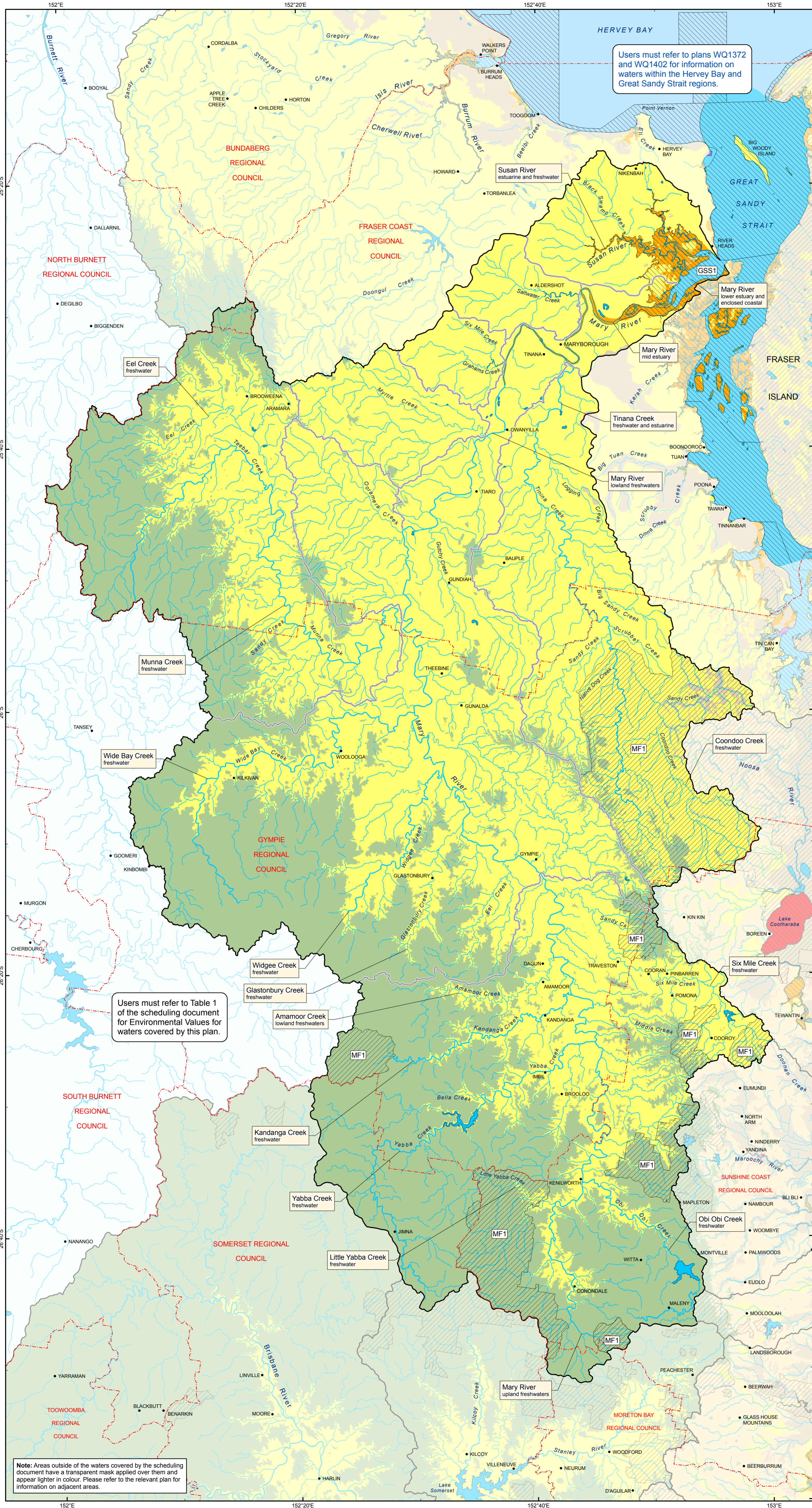


# MARY RIVER, INCLUDING ALL TRIBUTARIES OF THE RIVER Basin 138



Users must refer to plans WQ1372 and WQ1402 for information on waters within the Hervey Bay and Great Sandy Strait regions.

Users must refer to Table 1 of the scheduling document for Environmental Values for waters covered by this plan.

Note: Areas outside of the waters covered by the scheduling document have a transparent mask applied over them and appear lighter in colour. Please refer to the relevant plan for information on adjacent areas.

## Environmental Protection (Water) Policy 2009 South-east Queensland Map Series PLAN WQ1381

Publication date: July 2010

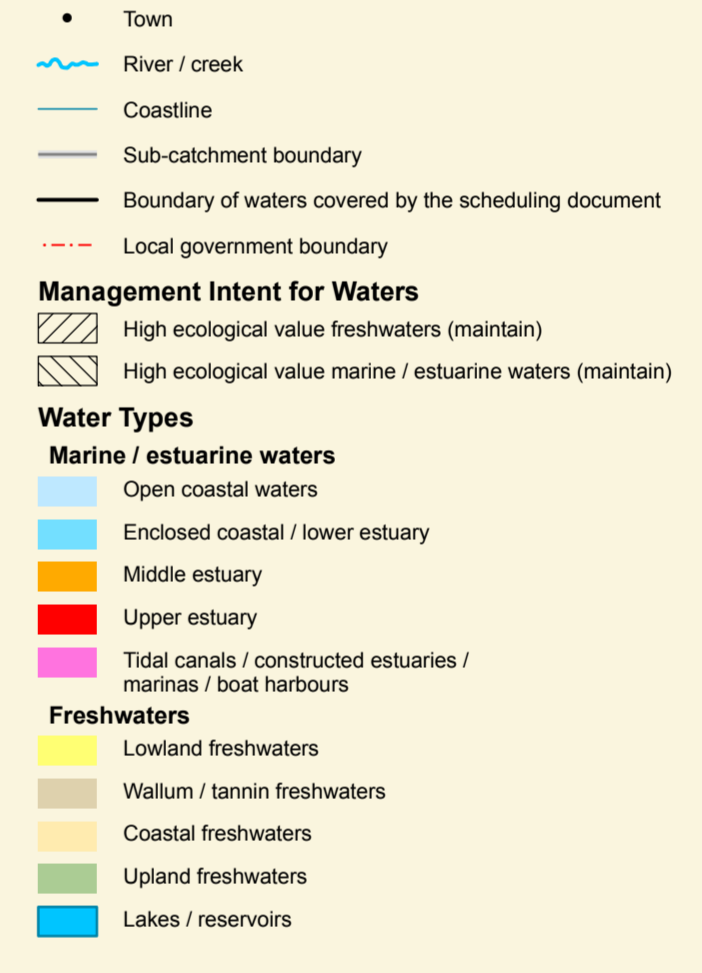
This plan forms part of the Mary River Environmental Values and Water Quality Objectives scheduling document, prepared pursuant to the *Environmental Protection (Water) Policy 2009*.



### Key to Environmental Values



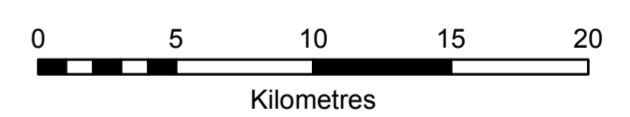
### Legend



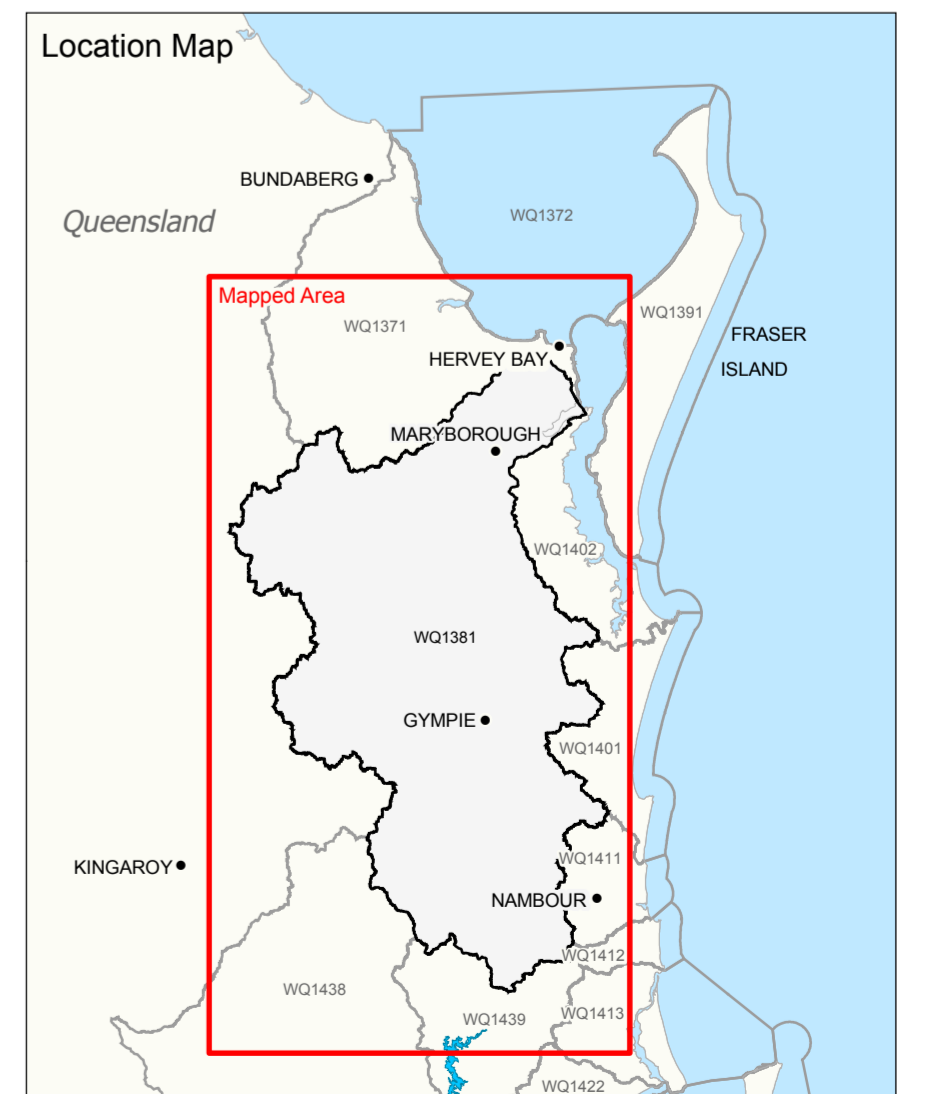
Note for users: Areas of the catchment that are not shown on this map as having a management intent of high ecological values, slightly disturbed or highly disturbed, have a management intent of moderately disturbed.



Projection: Map Grid of Australia (MGA) Zone 56  
Horizontal Datum: Geocentric Datum of Australia 1994 (GDA94)



Scale of 1:275,000 when printed @ A1



**Disclaimer**  
Whilst every care is taken to ensure the accuracy of this product, the Department of Environment and Resource Management makes no representations or warranties about its accuracy, reliability, completeness or suitability for any particular purpose and disclaims all responsibility and all liability (including indirect or consequential damage) and costs which you may incur as a result of the product being inaccurate or incomplete in any way and for any reason.  
Includes GEODATA product © Commonwealth of Australia (Geoscience Australia) 2010.  
© The State of Queensland (Department of Environment and Resource Management) 2010