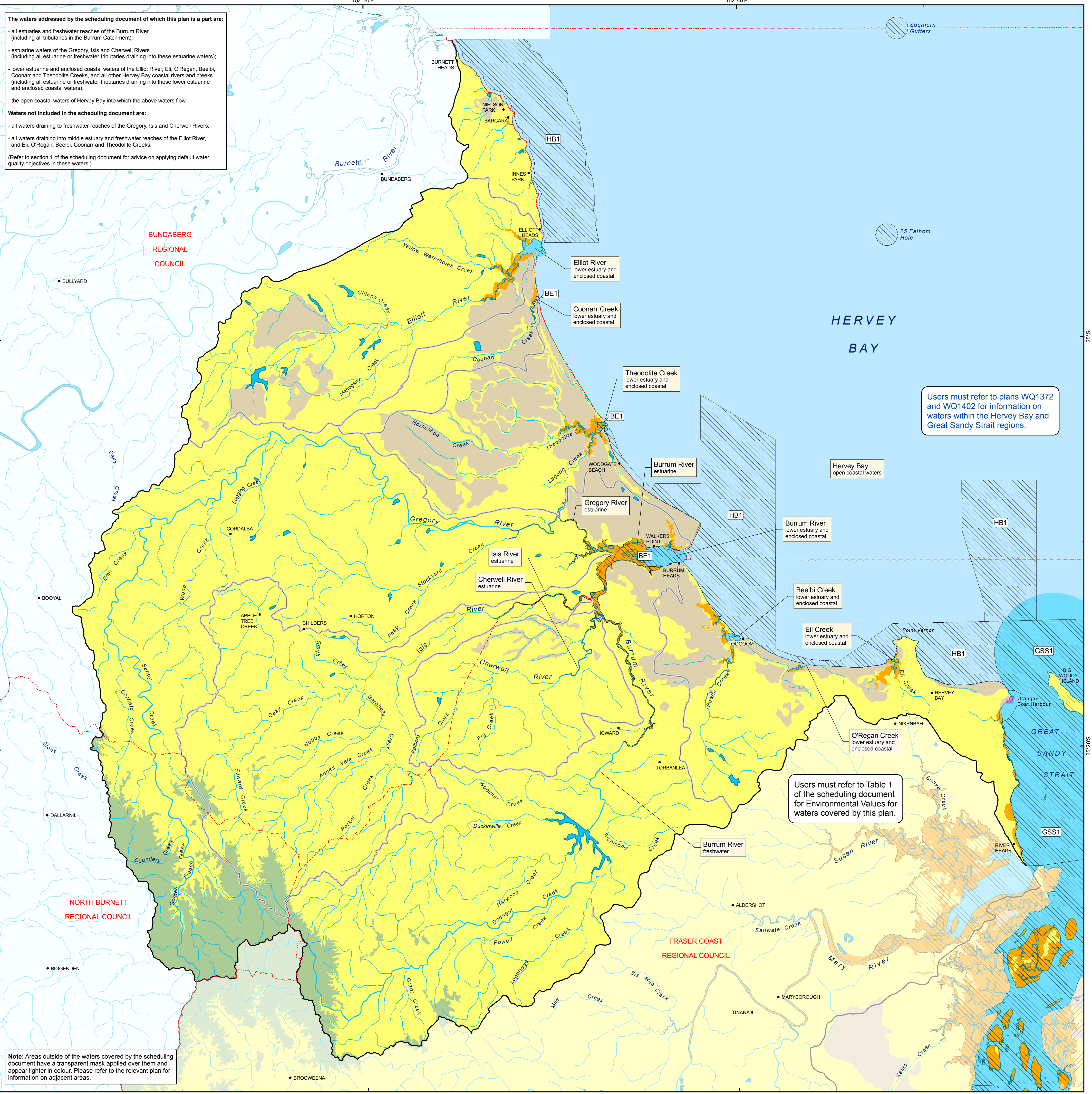


BURRUM, GREGORY, ISIS, CHERWELL AND ELLIOTT RIVERS, INCLUDING ALL HERVEY BAY COASTAL RIVERS AND CREEKS

Basin 137



Key to Environmental Values

	Aquatic Ecosystems
	Irrigation
	Farm Supply
	Stock Water
	Aquaculture
	Human Consumer
	Primary Recreation
	Secondary Recreation
	Visual Recreation
	Drinking Water
	Industrial Use
	Cultural & Spiritual Values

Legend

	Town	Water Types
	Coastline	Marine / estuarine waters
	River / creek	Open coastal waters
	Sub-catchment boundary	Enclosed coastal / lower estuary
	Boundary of waters covered by the scheduling document	Middle estuary
	Local government boundary	Upper estuary
	Management Intent for Waters	Tidal canals / constructed estuaries / marinas / boat harbours
	High ecological value freshwaters (maintain)	Freshwaters
	High ecological value marine / estuarine waters (maintain)	Lowland freshwaters
		Wallow / tannin freshwaters
		Coastal freshwaters
		Upland freshwaters
		Lakes / reservoirs

Note for users: Areas of the catchment that are not shown on this map as having a management intent of high ecological values, slightly disturbed or highly disturbed, have a management intent of moderately disturbed.

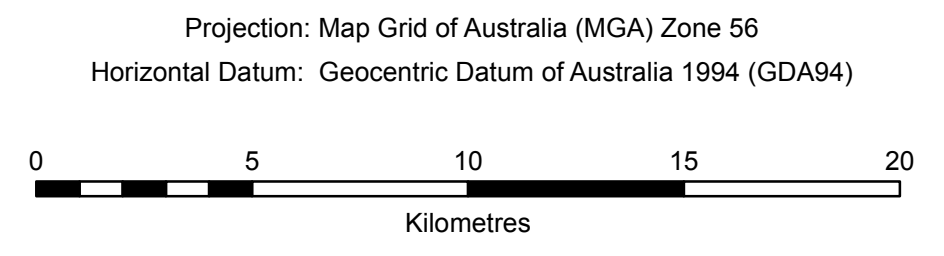
Environmental Protection (Water) Policy 2009

South-east Queensland Map Series

PLAN WQ1371

Publication date: July 2010

This plan forms part of the Burrum, Gregory, Isis, Cherwell and Elliott Rivers Environmental Values and Water Quality Objectives scheduling document, prepared pursuant to the *Environmental Protection (Water) Policy 2009*.



Disclaimer
Whilst every care is taken to ensure the accuracy of this product, the Department of Environment and Resource Management makes no representations or warranties about its accuracy, reliability, completeness or suitability for any particular purpose and disclaims all responsibility and all liability (including without limitation, liability in negligence) for all expenses, losses, damages (including indirect or consequential damage) and costs which you may incur as a result of the product being inaccurate or incomplete in any way and for any reason.
Includes GEODATA product © Commonwealth of Australia (Geoscience Australia) 2010.
© The State of Queensland (Department of Environment and Resource Management) 2010